

DD Solid Link Luting System – Dental laboratory

The DD Solid Link Luting System is a complete solution for dental laboratories and dental offices for the permanent luting of all common dental materials. DD Uni Bond is suitable for all materials except PMMA. Please use suitable bonding agent.

1. conditioning titanium base

preparing

Clean and prepare the titanium base according to manufacturer's instructions. The surface to be bonded must be free of impurities and grease. We recommend closing the screw channel before bonding.

2. conditioning abutment/restoration

preparing

Clean and prepare restoration according to manufacturer's instructions.

3. luting

application of DD Uni Bond



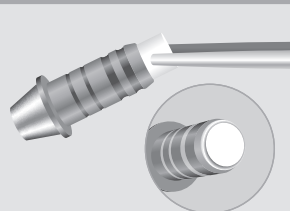
let it react for **60 s**



drying



sealing screw channel



application of DD Solid Link

e.g. shade dentine

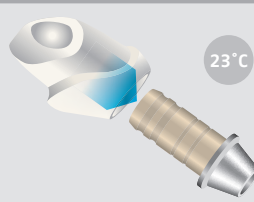


Processing time approx. **2 min**

Observe bleeding



attaching the restoration



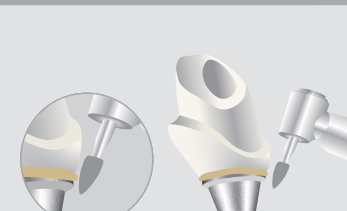
setting time approx.
7 min (slight pressure)

Fitting control

excess removal

- a) remove after curing
- b) in gel phase cover with glycerine gel and remove excess after

a) remove excess



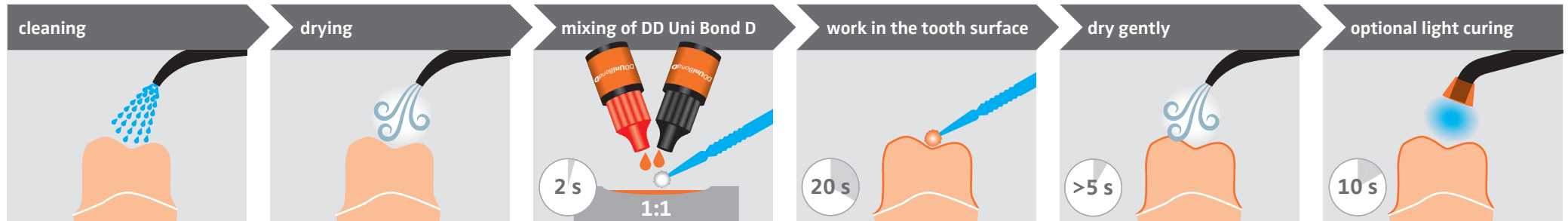
b) optional glycerine gel



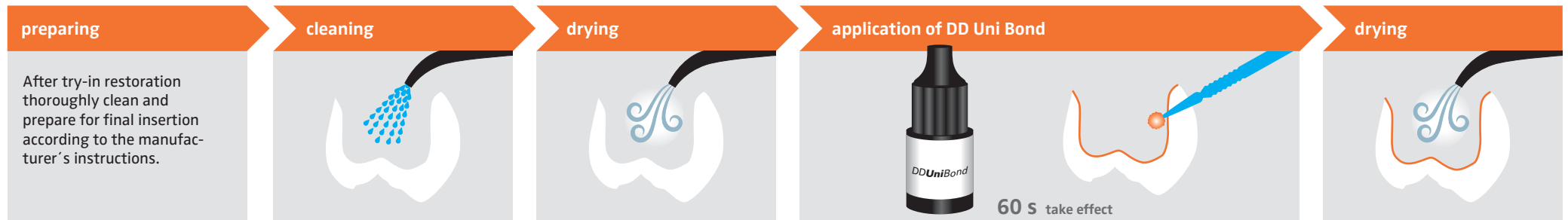
DD Solid Link Luting System – Dentist

The DD Solid Link Luting System is a complete solution for dental laboratories and dental offices for the permanent luting of all common dental materials. DD Uni Bond is suitable for all materials except PMMA. Please use suitable PMMA bonding agent.

1. conditioning tooth structure



2. conditioning restoration



3. luting

